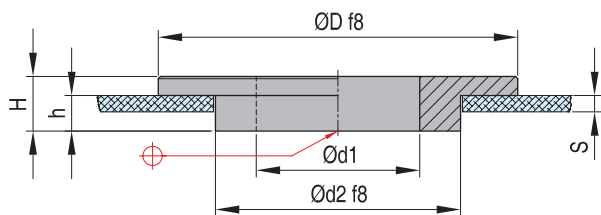


R23

Кольцо центрирующее

Материал: сталь 1.7130

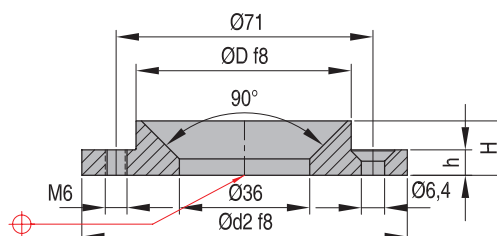


REF	D	H	h	d2	d1	S
R2310015	100	15,0	7	90	60	3,0
R2310017		17,0	9			5,0
R2310019		19,0	11			7,0
R2310020-5		20,5	13			8,5
R2311015	110	15,0	7	90	60	3,0
R2311017		17,0	9			5,0
R2311019		19,0	11			7,0
R2311020-5		20,5	13			8,5
R2312015	120	15,0	7	90	60	3,0
R2312017		17,0	9			5,0
R2312019		19,0	11			7,0
R2312020-5		20,5	13			8,5
R2312515	125	15,0	7	90	60	3,0
R2312517		17,0	9			5,0
R2312519		19,0	11			7,0
R2312520-5		20,5	13			8,5
R2316015	160	15,0	7	90	60	3,0
R2316017		17,0	9			5,0
R2316019		19,0	11			7,0
R2316020-5		20,5	13			8,5
R2317515	175	15,0	7	90	60	3,0
R2317517		17,0	9			5,0
R2317519		19,0	11			7,0
R2317520-5		20,5	13			8,5

DHR 21

Кольцо центрирующее

Материал: сталь 1.7130



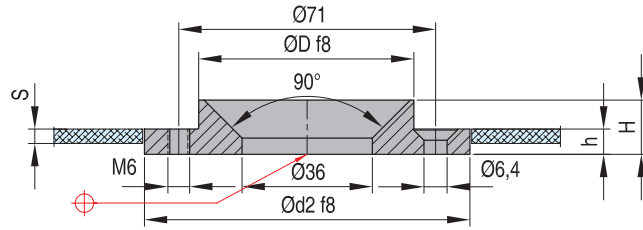
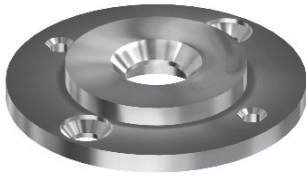
REF	D	H	h	d2
DHR2106008	60	8	4	90
DHR2108012	80	12		

CAD reference point

Кольцо центрирующее

DHR 21

Материал: сталь 1.7130

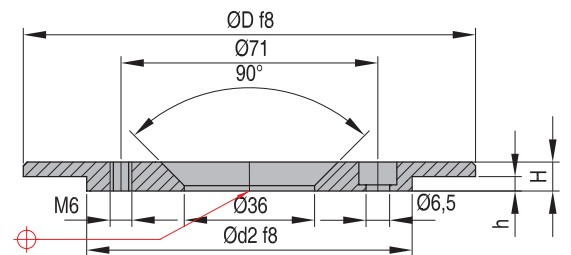
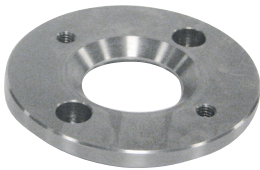


REF	D	H	h	d2	S
DHR2106011	60	11	7	90	3
DHR2106013		13	9		5
DHR2108015	80	15	7		3
DHR2108017		17	9		5

Кольцо центрирующее

DHR 21

Материал: сталь 1.7130

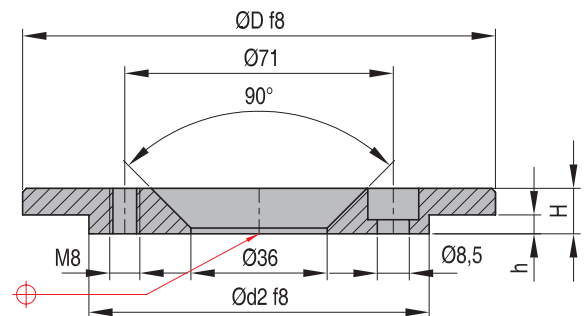


REF	D	H	h	d2
DHR2112008	120	8	4	90

Кольцо центрирующее

DHR 21

Материал: сталь 1.7130

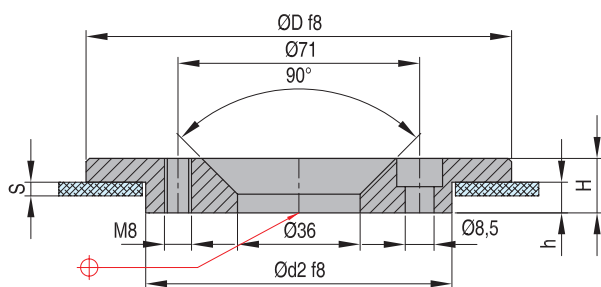


REF	D	H	h	d2
DHR2110012	100	12	4	90
DHR2111012	110			
DHR2112012	120			
DHR2112512	125			
DHR2114012	140			
DHR2115012	150			
DHR2116012	160			
DHR2117512	175			
DHR2118012	180			
DHR2120012	200			
DHR2125012	250			

DHR 21

Кольцо центрирующее

Материал: сталь 1.1730



REF	D	H	h	d2	S
DHR2110015	100	15	7	90	3,0
DHR2110017		17	9		5,0
DHR2110019		19	11		7,0
DHR2110021		21	13		8,5
DHR2111015	110	15	7	90	3,0
DHR2111017		17	9		5,0
DHR2111019		19	11		7,0
DHR2111021		21	13		8,5
DHR2112015	120	15	7	90	3,0
DHR2112017		17	9		5,0
DHR2112019		19	11		7,0
DHR2112021		21	13		8,5
DHR2112515	125	15	7	90	3,0
DHR2112517		17	9		5,0
DHR2112519		19	11		7,0
DHR2112521		21	13		8,5
DHR2116015	160	15	7	90	3,0
DHR2116017		17	9		5,0
DHR2116019		19	11		7,0
DHR2116021		21	13		8,5
DHR2117515	175	15	7	90	3,0
DHR2117517		17	9		5,0
DHR2117519		19	11		7,0
DHR2117521		21	13		8,5